



# STACKED BRIM

TO  
THE

WITH OPTIONS



2025  
GOLF CUSTOM  
HEADWEAR PROGRAM

# OUR STORY

## DISCOVER SHADE HEADWEAR

At Shade Headwear, it's not about us—it's about you. Our mission is to elevate your brand through custom private-label headwear, allowing your brand to make a bold statement. We help you tell your story with headwear that speaks volumes.

## WHY SHADE HEADWEAR?

Our team members are passionate about the golf, the great outdoors, craft beer and of course, creating cool custom headwear. With over five decades of combined experience in design, sourcing, and branding, we've perfected the art of bespoke headwear solutions.

Ready to elevate your club, course or event brand with our expertise? Let's craft headwear that tells your story in style.

# PROGRAM DETAILS

Discover the ultimate custom private-label headwear program. We stand out not because we're the only ones who can do it, but because of how we do it. With minimal rules & restrictions, in our program we empower you to control the design outcome.

## BRAND FOCUSED

Your headwear should highlight your brand, not ours. We promise to keep your headwear free from unnecessary supplier graphics, stickers, and tags, ensuring a clean and professional shelf appeal.

## CUSTOMIZATION AT ITS BEST

Our private-label solution starts from scratch. Each hat is individually constructed, allowing you to control every detail. From fabric colors to stitching, panels, eyelets, buttons, and undervisors, you have the flexibility to customize every element, ensuring your design stands out.

## ELEVATE YOUR BRAND

Partner with us to create the perfect hat that elevates your brand. Let's craft headwear solutions that truly represents you, with unmatched quality and a flawless finish.



**144** 144 PIECE TOTAL ORDER UP TO 3 STYLES OF 48 PIECES  
12 PIECES PER FABRIC COLOR



**30-35 DAYS PRODUCTION**  
From final art approval



**EXPECTED ART TURN TIME OF 5-7 BUSINESS DAYS**  
Could be up to 10-14 days during peak seasons



**3-5 DAYS SHIPPING AVERAGE LANDED TIME**  
Could be longer during peak seasons



**FREE CUSTOM INTERIOR PRIVATE LABEL ON ORDERS OVER 144 PIECES**  
Below 144 pieces add \$.50 per unit



**MOST HAT STYLES HAVE SELF FABRIC INNER LINER**  
Reduces sweat stains & hides front panel appliqué affects & improves shelf appeal



**QUANTITY BREAKS AT 144/288/576 PER STYLE**  
MOQ quotes available for larger quantities.



**NO SET-UP OR DIGITIZING FEE'S**



**FREE CONTRAST COLOR OPTIONS FABRIC PANELS, BUTTON, EYELETS, STITCHING, UNDER VISOR, SWEATBAND & CLOSURE**



**MILLIONS OF POSSIBLE CUSTOM COMBINATIONS**

## NEW ENHANCED ORDER FLEXIBILITY

### EMBROIDERY OPTIONS

Customers can now get up to two embroidery color options with a 48-piece style. Eligible embroidery types include: Flat, 3D Puff, Pearl Chain Stitch, Flatlock Stitch and other select combinations.

\*Custom appliques and printing require 48 pieces per graphic/type/color.

### FABRIC CUSTOMIZATION

We've expanded our fabric customization options. Now, you can:

- Change fabric types every 24 pieces within a 48-piece style, as long as they belong to the same family (see below).
- Change fabric colors every 12 pieces within a 48-piece style.

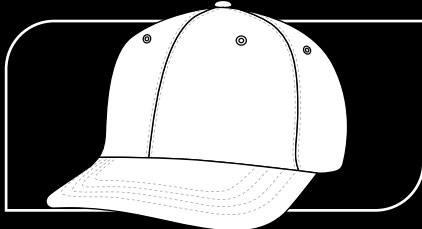
### FABRIC FAMILIES

- **Cotton Family:** Cotton Twill, Heather Twill, Vintage Washed Cotton Twill, Lightweight Cotton, Cotton Ripstop, Wide wale and Micro-Corduroy and Trucker Mesh
- **Poly Family:** Active Poly, Active Poly Lite, ActiveDri Poly, ActiveTech+ and MicroWick+ (includes perforated options)

# EASY TO ORDER SIX EASY STEPS

## STEP 1

Choose a shape or style



HAT, VISOR, BUCKET, KNIT

## STEP 2

Choose a visor shape



CURVE, SLIGHT CURVE, FLAT

## STEP 3

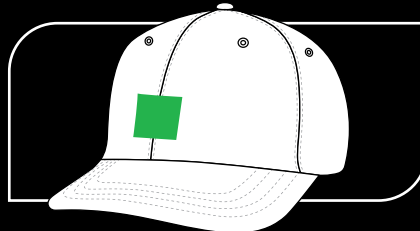
Choose fabric & color



SOLID COLOR, CONTRAST PANELS

## STEP 4

Choose an embellishment or custom applique options



SEE OPTIONS ON PAGES 20-21

## STEP 5

Add custom upgrades & trim options



SEE OPTIONS ON PAGES 16-27

## STEP 6

Choose FREE contrast options



PANELS, VISOR/UNDERSVISOR, BUTTON, EYELETS, STITCHING

# TABLE OF CONTENTS

2-29	<b>CUSTOM HEADWEAR PROGRAM</b>
2-3	PROGRAM DETAILS
4	WHAT'S NEW
5-11	HEADWEAR
12	VISORS / BUCKETS
13-14	COLD WEATHER KNITS
16-28	<b>DESIGN GUIDE</b>
16-17	COLOR PALETTE
18-19	EMBROIDERY & PRINT   LABELS & PATCHES
20-21	VISORS, CLOSURES & ROPES
22-25	DROP GRAPHICS
26-27	PRINT PATTERNS
28	TRENDING FONTS
29	FAQS
30-35	<b>DOMESTIC HEADWEAR PROGRAM</b>
31	PROGRAM DETAILS
32-35	HEADWEAR
35	VISOR
35	COLD WEATHER KNIT

# WHAT'S NEW?

## WIDE WALE CORDUROY

Our new wide wale corduroy hits a little different. This 12-wale corduroy merges softness not normally found in this fabric class with the ability to adapt the final finish with classic ornamentation and styling for the perfect classic corduroy look. Choose from seven rich proprietary colors with softened undertones and create a one-off look your customers can wear with style.



SHOWN IN  
**DEREK**  
Shape 5

## ACTIVEPOLY LITE

This new lightweight, moisture wicking, blended polyester fabric redefines the term "Lightweight Performance". The 60% Polyester/30% Cotton/10% Nylon blend creates possibly the softest-feeling (velvet-like) hand feel of any fabric in this class. A subtly checked texture makes this fabric a versatile, chic, must-have fabric upgrade.



SHOWN IN  
**LUKE**  
Shape 23

Available in 8 colors

## LIGHTWEIGHT COTTON

Our New Premium Lightweight Cotton redefines what this fabric class should be. It combines a soft-to-the-touch hand feel with and airiness appeal to create the most comfortable in-class fit.

Available in 12 custom-dyed colors.



SHOWN IN  
**LUKE**  
Shape 23

## COTTON RIPSTOP

100% medium-weight cotton with semi-pronounced cross hatch pattern gives this premium fabric a subtle textured hand-feel.

Available in 10 stylish colors.



SHOWN IN  
**LUKE**  
Shape 23



B



**FABRIC:** COTTON TWILL  
**APPLIQUE:** STRIPED EMBROIDERY  
**UPGRADES:** HEAVY BRAIDED ROPE + EMBROIDERY OPTION

C



**FABRIC:** HEATHER TWILL  
**APPLIQUE:** LASER ETCHED LEATHER PATCH  
**UPGRADES:** FABRIC + CUSTOM APPLIQUE + CLOSURE

D



**FABRIC:** ACTIVE POLY  
**APPLIQUE:** HIGH DENSITY PRINT  
**UPGRADES:** FABRIC + CUSTOM APPLIQUE + DESIGNER ROPE

E



**FABRIC:** ACTIVE TECH+  
**APPLIQUE:** MOLDED SILICONE RUBBER PATCH  
**UPGRADES:** FABRIC + CUSTOM APPLIQUE + NYLON ROPE

F



**FABRIC:** ACTIVE POLY  
**APPLIQUE:** NEEDLE STITCH EMBROIDERY  
**UPGRADES:** FABRIC + SPECIALTY EMBROIDERY + NYLON ROPE

G



**FABRIC:** ACTIVE POLY  
**APPLIQUE:** 3D PUFF / FLAT EMBROIDERY  
**UPGRADES:** FABRIC + EMBROIDERY

# 3 RUTLEDGE

MID-HIGH CROWN - STRUCTURED

A



SHOWN IN  
**FABRIC:** QUILTED ACTIVE DRI POLY / HEATHER TWILL VISOR / TRUCKER MESH  
**APPLIQUE:** SCREEN PRINTED LEATHER PATCH **UPGRADES:** FABRIC + QUILTED OPTION + SPECIALTY EMBROIDERY

- ◇ MID-HIGH CROWN PROFILE (AVAILABLE AS 5 OR 6 PANEL)
- ◇ FULL FABRIC -OR- TRUCKER STYLE
- ◇ VISOR OPTIONS:
  - CURVE
  - SLIGHT CURVE
  - FLAT
- ◇ CLOSURE OPTIONS:
  - PLASTIC SNAP
  - ADJ. PLASTIC CLIP
  - CLOTH STRAP W/ METAL SLIDER
  - VELCR
  - TPR RUBBER SNAP
  - LEATHER STRAP W/ BUCKLE

# DEREK 5

MID CROWN - STRUCTURED

(A)



SHOWN IN  
**FABRIC:** MICRO CORDUROY / TRUCKER MESH    **APPLIQUE:** FLAT EMBROIDERY  
**UPGRADES:** FABRIC + NYLON ROPE

- ◇ **MID-HIGH CROWN PROFILE (AVAILABLE AS 5 OR 6 PANEL)**
- ◇ **FULL FABRIC -OR- TRUCKER STYLE**
- ◇ **VISOR OPTIONS:**
  - CURVE                      • SLIGHT CURVE                      • FLAT
- ◇ **CLOSURE OPTIONS:**
  - PLASTIC SNAP    • ADJ. PLASTIC CLIP                      • CLOTH STRAP W/ METAL SLIDER
  - VELCR                      • TPR RUBBER SNAP                      • LEATHER STRAP W/ BUCKLE

(B)



**FABRIC:** COTTON TWILL / SOFT TRUCKER MESH  
**APPLIQUE:** WOVEN LABEL W/ RAISED SATIN STITCH  
**UPGRADES:** CUSTOM APPLIQUE + NYLON ROPE

(C)



**FABRIC:** ACTIVE DRI POLY + PERFORATED BACK PANELS  
**APPLIQUE:** HEAVY HIGH DENSITY PRINT  
**UPGRADES:** FABRIC + CUSTOM APPLIQUE + PERFORATED BACK PANELS

(D)



**FABRIC:** ACTIVETECH+  
**APPLIQUE:** RAISED SATIN STITCH  
**UPGRADES:** FABRIC + EMBROIDERY TYPE

(E)



**FABRIC:** COTTON RIPSTOP  
**APPLIQUE:** BACKWARDS CROSS STITCH EMBROIDERY  
**UPGRADES:** FABRIC + EMBROIDERY TYPE

(F)



**FABRIC:** PEARL POLYESTER  
**APPLIQUE:** SOLID FILL FLAT EMBROIDERY W/ FLAT OUTLINE  
**UPGRADES:** FABRIC + FABRIC UPGRADE

(G)



**FABRIC:** MICROWICK+  
**APPLIQUE:** HIGH DENSITY PRINT ON FABRIC PATCH W/ RAISED EDGE  
**UPGRADES:** FABRIC + CUSTOM APPLIQUE



B



**FABRIC:** CAMO COTTON TWILL / MICRO CORDUROY INSERT / TRUCKER MESH  
**APPLIQUE:** EMBROIDERY ON TWILL PATCH W/ RAISED EMBROIDERY EDGE  
**UPGRADES:** FABRIC + CUSTOM APPLIQUE

C



**FABRIC:** COTTON TWILL  
**APPLIQUE:** EMBROIDERY ON FELT PATCH W/ SATIN STITCH  
**UPGRADES:** CUSTOM APPLIQUE

D



**FABRIC:** ACTIVE POLY + PERFORATED BACK PANELS  
**APPLIQUE:** HIGH DENSITY SCREEN PRINT  
**UPGRADES:** FABRIC + CUSTOM APPLIQUE + PERFORATED BACK PANELS

E



**FABRIC:** COTTON TWILL / WIDE WALE CORDUROY INSERT  
**APPLIQUE:** FLAT EMBROIDERY  
**UPGRADES:** FABRIC + HEAVY BRAIDED ROPE

F



**FABRIC:** HEATHER TWILL / COTTON TWILL  
**APPLIQUE:** WOVEN LABEL W/ SATIN STITCH  
**UPGRADES:** FABRIC + CUSTOM APPLIQUE + DESIGNER ROPE

G



**FABRIC:** QUILTED ACTIVE DRI POLY / HEATHER TWILL / TRUCKER MESH  
**APPLIQUE:** WOVEN LABEL W/ SATIN STITCH  
**UPGRADES:** FABRIC + QUILTED OPTION + CUSTOM APPLIQUE

# 8 WOODWARD

HYBRID SIX PANEL-MID-HIGH CROWN-STRUCTURED

A



SHOWN IN  
**FABRIC:** QUILTED ACTIVE DRI POLY / HEATHER TWILL  
**APPLIQUE:** WOVEN LABEL W/ SATIN STITCH  
**UPGRADES:** FABRIC + QUILTED OPTION + CUSTOM APPLIQUE + DESIGNER ROPE

- ◇ HYBRID 6-PANEL
- ◇ FULL FABRIC -OR- TRUCKER STYLE BACK PANELS
- ◇ VISOR OPTIONS:
  - CURVE
  - SLIGHT CURVE
  - FLAT
- ◇ CLOSURE OPTIONS:
  - PLASTIC SNAP
  - ADJ. PLASTIC CLIP
  - CLOTH STRAP W/ METAL SLIDER
  - TPR RUBBER SNAP

# LANCE 17

LOW PROFILE PERFORMANCE

(A)



SHOWN IN  
**FABRIC:** ACTIVE POLY  
**APPLIQUE:** MOLDED SILICONE RUBBER PATCH  
**UPGRADES:** FABRIC + CUSTOM APPLIQUE

- ◇ **LOW CROWN PROFILE / PERFORMANCE**
- ◇ **FULL FABRIC -OR- PERFORATED PANELS**
- ◇ **VISOR OPTIONS:**
  - CURVE
- ◇ **CLOSURE OPTIONS:**
  - D-RING W/ ELASTIC LOOP & SELF FABRIC VELCRO STRAP

(B)



**FABRIC:** PEARL POLYESTER  
**APPLIQUE:** FLAT EMBROIDERY  
**UPGRADES:** FABRIC

(C)



**FABRIC:** PEARL POLYESTER  
**APPLIQUE:** FLAT EMBROIDERY  
**UPGRADES:** FABRIC

# WILSON 18

RUNNER / CAMPER - UNSTRUCTURED

(A)



SHOWN IN  
**FABRIC:** PREMIUM NYLON / SOFT TRUCKER MESH  
**APPLIQUE:** WOVEN LABEL W/ JUMP STITCH  
**UPGRADES:** FABRIC + CUSTOM APPLIQUE + VISOR BINDING

- ◇ **5-PANEL RUNNER / CAMPER HAT**
- ◇ **FULL FABRIC -OR- TRUCKER MESH SIDES -OR- PERFORATED PANELS**
- ◇ **VISOR OPTIONS:**
  - CURVE
  - SLIGHT CURVE
  - FLAT
  - EVA FLAT PACKABLE VISOR W/ VISOR BINDING
- ◇ **CLOSURE OPTIONS:**
  - PLASTIC SNAP
  - ADJ. PLASTIC CLIP
  - CLOTH STRAP W/ METAL SLIDER
  - D-RING W/ ELASTIC LOOP & SELF FABRIC VELCRO STRAP

(B)



**FABRIC:** ACTIVEDRI POLY + PERFORATED SIDE PANELS  
**APPLIQUE:** NEEDLE STITCH EMBROIDERY  
**UPGRADES:** FABRIC + EMBROIDERY TYPE + PERFORATED FABRIC + VISOR BINDING

(C)



**FABRIC:** ACTIVETECH+  
**APPLIQUE:** WOVEN LABEL W/ JUMPSTITCH  
**UPGRADES:** FABRIC + CUSTOM APPLIQUE + VISOR BINDING





**21** **BLAKE**  
UNSTRUCTURED

(B)



**FABRIC:** UNSTRUCTURED ACTIVE POLY  
**APPLIQUE:** FLAT EMBROIDERY  
**UPGRADES:** FABRIC + DESIGNER ROPE + VISOR SANDWICH

(C)



**FABRIC:** ACTIVE DRI POLY + PERFORATED BACK PANELS  
**APPLIQUE:** 3D PEARL CHAIN STITCH W/ FLAT EMBROIDERY  
**UPGRADES:** FABRIC + EMBROIDERY TYPE + PERFORATED BACK PANELS + NYLON ROPE

(A)



SHOWN IN  
**FABRIC:** WIDE WALE CORDUROY  
**APPLIQUE:** FLAT EMBROIDERY + FLAT EMBROIDERY SIDE HIT  
**UPGRADES:** FABRIC + 2ND EMBROIDERY LOCATION + DESIGNER ROPE

◇ "GRANDPA" / SURFER HAT (AVAILABLE AS 5 OR 6 PANEL)

◇ FULL FABRIC -OR- TRUCKER STYLE

◇ VISOR OPTIONS:

- CURVE
- SLIGHT CURVE
- FLAT
- EVA FLAT PACKABLE VISOR W/ VISOR BINDING

◇ CLOSURE OPTIONS:

- PLASTIC SNAP
- ADJ. PLASTIC CLIP
- CLOTH STRAP W/ METAL SLIDER
- TPR RUBBER SNAP
- D-RING W/ ELASTIC LOOP & SELF FABRIC VELCRO STRAP

(D)



**FABRIC:** ACTIVE POLY  
**APPLIQUE:** FLATLOCK STITCH  
**UPGRADES:** FABRIC + EMBROIDERY TYPE

(E)



**FABRIC:** TRUCKER MESH / COTTON TWILL  
**APPLIQUE:** WOVEN LABEL W/ JUMP STITCH  
**UPGRADES:** FULLY SUBLIMATED PRINTED CROWN + CUSTOM APPLIQUE + NYLON ROPE

(F)



**FABRIC:** ACTIVE POLY  
**APPLIQUE:** HIGH DENSITY SCREEN PRINT  
**UPGRADES:** FABRIC + CUSTOM APPLIQUE + DESIGNER ROPE

(G)



**FABRIC:** WASHED COTTON TWILL  
**APPLIQUE:** EMBROIDERY ON FELT PATCH  
**UPGRADES:** CUSTOM APPLIQUE + WASH

# LUKE 23

REGULAR CROWN - UNSTRUCTURED

(A)



SHOWN IN  
**FABRIC:** ACTIVE POLY LITE  
**APPLIQUE:** SOLID FILL FLAT EMBROIDERY W/ FLAT EMB. OUTLINE  
**UPGRADES:** FABRIC + NYLON ROPE

- ◇ **THE ULTIMATE “DAD” HAT (AVAILABLE AS 5 OR 6 PANEL)**
- ◇ **FULL FABRIC -OR- TRUCKER STYLE**
- ◇ **VISOR OPTIONS:**
  - CURVE      • SLIGHT CURVE      • FLAT
- ◇ **CLOSURE OPTIONS:**
  - PLASTIC SNAP      • VELCRO STRAP      • ADJ. PLASTIC CLIP
  - CLOTH STRAP W/ METAL SLIDER      • LEATHER STRAP W/ BUCKLE
  - TPR RUBBER SNAP

(B)



**FABRIC:** ACTIVE POLY  
**APPLIQUE:** NEEDLE STITCH EMBROIDERY  
**UPGRADES:** FABRIC + EMBROIDERY TYPE

(C)



**FABRIC:** ACTIVE POLY  
**APPLIQUE:** WOVEN LABEL W/ SATIN STITCH  
**UPGRADES:** FABRIC + CUSTOM APPLIQUE + STRETCH FIT SWEATBAND

(D)



**FABRIC:** COTTON TWILL / SOFT TRUCKER MESH  
**APPLIQUE:** RAISED AND FLAT EMBROIDERY  
**UPGRADES:** EMBROIDERY TYPE

(E)



**FABRIC:** LIGHTWEIGHT COTTON  
**APPLIQUE:** FLATLOCK STITCH  
**UPGRADES:** FABRIC + EMBROIDERY TYPE

(F)



**FABRIC:** ACTIVETECH+  
**APPLIQUE:** FLAT EMBROIDERY  
**UPGRADES:** FABRIC

(G)



**FABRIC:** MICROWICK+  
**APPLIQUE:** WOVEN LABEL W/ SATIN STITCH  
**UPGRADES:** FABRIC + CUSTOM APPLIQUE



# RESET

1

TWO PANEL "PICKLEBALL" HAT - UNSTRUCTURED



**FABRIC:** MICROWICK+  
**APPLIQUE:** SOLID FILL FLAT EMBROIDERY W/ FLAT OUTLINE  
**UPGRADES:** FABRIC

# PINKSTON

2

ADJUSTABLE HIGH CROWN - UNSTRUCTURED



**FABRIC:** COTTON TWILL / HEATHER TWILL  
**APPLIQUE:** HIGH DENSITY SCREEN PRINT  
**UPGRADES:** FABRIC + CUSTOM APPLIQUE + DESIGNER ROPE

# CLIFF

4

HIGH CROWN FOAMY TRUCKER - STRUCTURED



**FABRIC:** POLY FOAM W/ TRUCKER MESH  
**APPLIQUE:** CUSTOM SUBLIMATION W/ HIGH DENSITY SCREEN PRINT  
**UPGRADES:** CUSTOM SUBLIMATION + CUSTOM APPLIQUE

# MITCH

6

STRETCH FIT - MID HIGH CROWN - STRUCTURED



**FABRIC:** ACTIVE POLY  
**APPLIQUE:** FLAT EMBROIDERY  
**UPGRADES:** FABRIC

# PITCH

7

STRETCH FIT - HIGH CROWN - STRUCTURED



**FABRIC:** ACTIVE POLY  
**APPLIQUE:** FLAT EMBROIDERY  
**UPGRADES:** FABRIC

# BURTON

9

ADJUSTABLE MID CROWN FIT W/ ACTIVE FLEX STRETCH SWEATBAND - STRUCTURED



**FABRIC:** ACTIVE POLY  
**APPLIQUE:** WOVEN LABEL SATIN STITCH  
**UPGRADES:** FABRIC + CUSTOM APPLIQUE + STRETCH FIT SWEATBAND

# LANDON 15

LOW CROWN SPORT VISOR



FABRIC: PEARLY POLYESTER  
APPLIQUE: FLAT EMBROIDERY  
UPGRADES: FABRIC

# HARRINGTON 19

HIGH CROWN TOUR VISOR



FABRIC: ACTIVE POLY LITE  
APPLIQUE: 3D PUFF EMBROIDERY  
UPGRADES: FABRIC + EMBROIDERY TYPE

# JULES 31

LOW PROFILE MID-BRIM FIT VISOR  
LADIES PERFORMANCE



FABRIC: ACTIVETECH+  
APPLIQUE: SOLID FILL FLAT EMBROIDERY  
UPGRADES: FABRIC

# BOONIE 16



FABRIC: ACTIVE POLY  
APPLIQUE: FLAT EMBROIDERY  
UPGRADES: FABRIC

Available with or without snaps

# FISHER 22



FABRIC: MICROWICK+  
APPLIQUE: FLAT EMBROIDERY  
UPGRADES: FABRIC

# BILLY 24



FABRIC: COTTON TWILL  
APPLIQUE: FLAT EMBROIDERY  
UPGRADES: UNDERVISOR DIGITAL PRINT



# BRONSON 10



**FABRIC:** WIDE CUFF MID-WEIGHT JERSEY KNIT  
**APPLIQUE:** WOVEN CLIP LABEL  
**UPGRADES:** CUSTOM APPLIQUE

# FALLON 11

AVAILABLE AS SOLID OR STRIPED CUFF



**FABRIC:** CLASSIC DOUBLE LAYER JERSEY KNIT  
**APPLIQUE:** WOVEN CLIP LABEL  
**UPGRADES:** CUSTOM APPLIQUE

# RYDER 12



**FABRIC:** SOFT WAFFLE KNIT  
**APPLIQUE:** SCREEN PRINTED LEATHER CLIP LABEL  
**UPGRADES:** CUSTOM APPLIQUE

# SLOAN 13



**FABRIC:** WIDE CUFF LIGHTWEIGHT LYCRA KNIT  
**APPLIQUE:** FLAT EMBROIDERY

# GARY 14



**FABRIC:** JERSEY KNIT JACQUARD W/ POM  
**UPGRADES:** POM

# PORTER 20



**FABRIC:** 2X2 SHALLOW RIB KNIT  
**APPLIQUE:** WOVEN LABEL W/ JUMP STITCH  
**UPGRADES:** CUSTOM APPLIQUE

\*Available in solid color or 2x2 twist

# JUDY 25



**FABRIC:** CABLE OR CHAIN CABLE KNIT  
**APPLIQUE:** WOVEN LABEL W/ JUMP STITCH  
**UPGRADES:** CUSTOM APPLIQUE + FAUX FUR POM

# SMITH 26

(DOCK WEAR FIT)



**FABRIC:** ACRYLIC SHALLOW RIB KNIT  
**APPLIQUE:** WOVEN CLIP LABEL W/ JUMP STITCH  
**UPGRADES:** CUSTOM APPLIQUE

# KYLE 27



**FABRIC:** 2X2 HEAVY WIDE SHALLOW RIB 100% ACRYLIC KNIT  
**APPLIQUE:** WOVEN CLIP LABEL W/ JUMP STITCH  
**UPGRADES:** CUSTOM APPLIQUE

# DOC 28



**FABRIC:** SOFT JERSEY KNIT  
**APPLIQUE:** SOLID FILL FLAT EMBROIDERY W/ FLAT OUTLINE

# STANLEY 29



**FABRIC:** RECYCLED RIBBED KNIT  
**APPLIQUE:** SOLID FILL FLAT EMBROIDERY

# MARLEY 30



**FABRIC:** ACRYLIC BLEND KNIT W/ SHALLOW RIB CUFF W/ POM  
**UPGRADES:** POM





# DESIGN GUIDE

FABRIC & COLOR PALETTE • CUSTOM APPLIQUES • VISOR SHAPES • CLOSURE OPTIONS • VISOR ROPES • CUSTOM PRINT PATTERNS

# FABRIC & COLOR PALETTE

## COTTON TWILL

WHITE	TWILIGHT
OFF WHITE	SLATE
BLACK	SKY
CHARCOAL	CAROLINA
METAL	ELECTRIC
STEEL	ROYAL
KHAKI	MINT
LATTE	FOREST
BROWN	GREEN
BUCK	OLIVE
TEXAS ORANGE	LIME
ORANGE	SURPLUS
NUGGET	BIRCH
YELLOW	SAGE
COPPER	PINK
MUSTARD	FUSCIA
RED	NANTUCKET RED
SCARLET	BLACK/GRAY CAMO
CRIMSON	NEW ARMY CAMO
MAROON	BRIGHT CAMO
NAVY	FADED CAMO

Camo \$.50 Upgrade

## HEATHER TWILL

+\$1

GRAY HEATHER	NAVY HEATHER
BLACK HEATHER	OLIVE HEATHER
BUCK HEATHER	CAROLINA HEATHER
CRIMSON HEATHER	

## VINTAGE WASHED COTTON TWILL

+\$1

CRIMSON	NAVY
SURPLUS	LATTE
CHARCOAL	FOREST

## NEW LIGHTWEIGHT COTTON TWILL

+\$0.50

CRIMSON	KHAKI
SAGE	STEEL
WHITE	GREEN
NAVY	NUGGET
BLACK	LT MOCHA
CHARCOAL	TWILIGHT

## NEW 280G COTTON RIPSTOP

+\$1

WHITE	CRIMSON
BLACK	NAVY
STEEL	CHARCOAL
KHAKI	SURPLUS
MOCHA	GREEN

## MICRO-CORDUROY

+\$1

WHITE	MAROON
STEEL	OLIVE
BLACK	SLATE
NAVY	MUSTARD
CAMEL	KHAKI

## TRUCKER MESH

WHITE	CRIMSON
BLACK	MAROON
CHARCOAL	PINK
METAL	NAVY
STEEL	CAROLINA
KHAKI	ROYAL
LATTE	PURPLE
BROWN	GREEN
BIRCH	FOREST
ORANGE	SAGE
YELLOW	OLIVE
SCARLET	LIME

## ECOMESH-TRUCKER MESH

+\$0.50



WHITE	RED
BLACK	KHAKI
METAL	SURPLUS
NAVY	

Recycled Trucker Mesh

## S105 SOFT TRUCKER MESH

WHITE	RED
BLACK	ORANGE
CHARCOAL	YELLOW
STEEL	NAVY
KHAKI	CAROLINA
BROWN	OLIVE

## NEW WIDE WALE CORDUROY

+\$1.50

BONE	BUCK
MIDNIGHT	CRIMSON
BLACK	SAGE
METAL	

## NEW 57732 ACTIVE POLY LITE

+\$1.50



CORAL	CHARCOAL
BLACK	SAGE
ORANGE	BROWN
TWILIGHT	PUTTY

\*Also available with perforation

## 6510 ACTIVE POLY

+\$1



WHITE	BUCK
BLACK	NAVY
CHARCOAL	SLATE
KHAKI	SURPLUS
CRIMSON	GREEN
TWILIGHT	

\*Also available with perforation

## ACTIVE DRI POLY

+\$1.50



WHITE	KHAKI
BLACK	CRIMSON
CHARCOAL	NAVY
STEEL	OLIVE

UPF 50 + ANTI-MICROBIAL + MOISTURE WICKING

\*Also available with perforation







**ACTIVETECH+** +\$1.50

	WHITE	CRIMSON
	BLACK	GREEN
	BLACK HEATHER	LATTE
	TWILIGHT HEATHER	BUCK
	CHARCOAL	DARK BLUE
	STEEL	SURPLUS
	LIGHT BLUE	

LIGHTWEIGHT + UPF 50 + ANTI-MICROBIAL + MOISTURE WICKING  
\*Also available with perforation

**MICROWICK+** +\$1.50

	WHITE	KHAKI
	BLACK	RED
	SURPLUS	NAVY

LIGHTWEIGHT + UPF 50 + ANTI-MICROBIAL + MOISTURE WICKING + RECYCLED MATERIALS  
\*Also available with perforation

**ACTIVE WICK** +\$1

WHITE	PINK
BLACK	NAVY
CHARCOAL	FOREST
STEEL	GREEN
YELLOW	PURPLE
SCARLET	

**STRETCH TWILL** +\$1

WHITE	SCARLET
BLACK	NAVY
STEEL	ROYAL

**ACTIVE MESH** +\$1

WHITE	PINK
BLACK	NAVY
CHARCOAL	CAROLINA
METAL	ROYAL
STEEL	FOREST
YELLOW	GREEN
SCARLET	PURPLE
CRIMSON	

**PEARL POLY** +\$1

	WHITE*	SCARLET
	BLACK*	MAROON
	CHARCOAL	PINK
	STEEL*	NAVY*
	KHAKI*	ROYAL
	BROWN	CAROLINA
	MUSTARD	AQUA
	ORANGE	FOREST
	RED	YELLOW
	GREEN	

\*Also available with perforation

**POLY FOAM**

WHITE	SCARLET
BLACK	PINK
CHARCOAL	NAVY
STEEL	ROYAL
BUCK	AQUA
TEXAS ORANGE	MINT
ORANGE	GREEN
YELLOW	OLIVE
CAROLINA	

**6511 NYLON** +\$1

CHARCOAL	BUTTER
METAL	SALMON
STEEL	CAROLINA
BUCK	LIME

**FELT** +\$1

WHITE*	ORANGE
CREAM	BUCK
CRIMSON	GREEN
BLACK	PINK
STEEL	BROWN
NAVY	

\*Only available for Applique

**KNIT**

WHITE	NAVY
BLACK	SLATE
STEEL	CAROLINA
CHARCOAL	ELECTRIC
KHAKI	ROYAL
BROWN	MINT
BUCK	FOREST
YELLOW	GREEN
MUSTARD	LIME
SCARLET	SURPLUS
MAROON	BIRCH
PINK	DEEP ORANGE
ROSE	SAGE

**MARLED KNIT**

LIGHT GRAY	LIGHT BLUE
LIGHT CHARCOAL	LIGHT GREEN
LIGHT RED	

\*Only available on Shape 30

**RECYCLED KNIT** +\$1

WHITE	CRIMSON
BLACK	NAVY
STEEL	SAGE
KHAKI	

\*Only available on Shape 29

# EMBROIDERY UPGRADES & CUSTOM APPLIQUES

EMBROIDERY 24 PER COLOR | LABELS & PATCHES 48 PER COLOR



FLAT EMBROIDERY\*  
\*INCLUDED IN BASE COST



SOLID FLAT FILL EMBROIDERY W/ FLAT  
EMBROIDERY OUTLINE  
\*INCLUDED IN BASE COST



STRIPED FLAT EMBROIDERY  
+\$1.00



FLAG EMBROIDERY  
+\$1.00



3D PUFF RAISED EMBROIDERY  
+\$1.50



EMBROIDERY ON TWILL PATCH W/  
RAISED EDGE EMBROIDERY  
+\$1.50



IN-LINE RAISED EMBROIDERY  
+\$1.50



3D RAISED PEARL CHAIN  
STITCH EMBROIDERY  
+\$1.50



FLAT PEARL CHAIN STITCH EMBROIDERY  
+\$1.00



FLATLOCK STITCH EMBROIDERY  
+\$1.00

NEW



BACK CROSS STITCH W/ RAISED EDGE  
+\$1.50

NEW



RAISED SATIN STITCH  
+\$1.50

NEW



NEEDLE HAND STITCH  
+\$2.00

NEW



LASER ETCHED LEATHER PATCH  
+\$2.00  
\*AVAILABLE IN BROWN AND TAN



SCREEN PRINTED LEATHER PATCH  
W/ JUMP STITCH +\$1.50  
\*AVAILABLE IN BROWN, TAN, AND GRAY



# EMBROIDERY UPGRADES & CUSTOM APPLIQUES

EMBROIDERY 24 PER COLOR | LABELS & PATCHES 48 PER COLOR



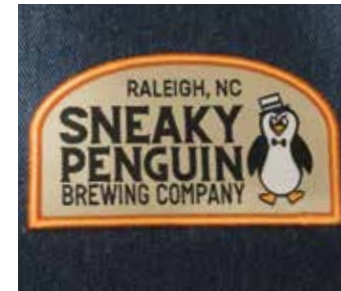
WOVEN LABEL W/ JUMP STITCH  
+50¢



WOVEN LABEL W/ SATIN STITCH  
+\$1.50



WOVEN LABEL W/ MERROWED EDGE  
+\$1.50



WOVEN LABEL W/ RAISED EDGE  
+\$1.50



SUBLIMATED POLY PATCH  
W/ MERROWED EDGE  
+\$1.50



EMBROIDERED TWILL PATCH  
+\$1.50



EMBROIDERY ON FELT PATCH  
+\$1.50

NEW



3D RAISED EMBROIDERY ON  
WASHED FRAYED TWILL PATCH  
+\$2.00



SCREEN PRINT ON WASHED  
FRAYED TWILL PATCH  
+\$2.00



HIGH DENSITY SCREEN PRINT  
+\$1.50

NEW



FELT PATCH W/ JUMP STITCH  
+\$1.50

\*MINIMUM ORDER 96 PCS  
\*SEE COLORS PG 17



HIGH DENSITY PRINT ON FABRIC PATCH  
W/ RAISED EDGE OR SATIN STITCH  
+\$2.00



TPR RUBBER PATCH  
+\$3.50  
+ MOLD FEE | UP TO 5-COLORS



SILICONE RUBBER PATCH  
+\$4.00  
+ MOLD FEE | UP TO 5-COLORS

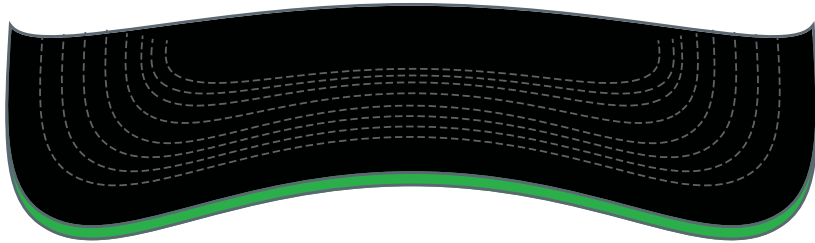
NEW



PUFF PRINT  
+\$2.00

# VISOR SHAPES

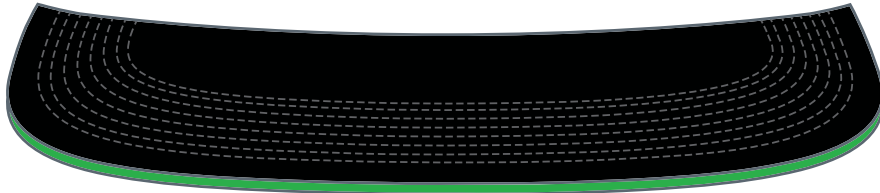
CURVED



SLIGHT CURVE



FLAT (SQUARE OR ROUNDED CORNERS)



# CLOSURE OPTIONS

TOP SIDE PONYTAIL CLOSURE  
+\$1



PLASTIC SNAP

**NEW**



TPR RUBBER SNAP +50¢

\*AVAILABLE IN BLACK, WHITE, GRAY, KHAKI



FABRIC W/ METAL SLIDER



VELCRO STRAP



ADJ. NYLON STRAP W/  
PLASTIC BUCKLE

+50¢



CLOTH STRAP W/ METAL BUCKLE\* +\$1



D-RING W/ ELASTIC LOOP &  
SELF FABRIC VELCRO STRAP

+50¢



LEATHER STRAP W/ METAL BUCKLE\* +\$1.50

\*AVAILABLE WITH BRONZE OR NICKEL BUCKLE



# VISOR ROPES

**NYLON TRUCKER ROPE** +\$.50



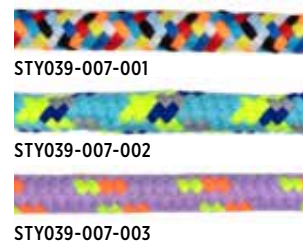
**HEAVY BRAIDED TRUCKER ROPE** +\$.1.00



**HEAVY COTTON CORD** +\$.1.00



**DESIGNER COTTON CORD** +\$.1.00



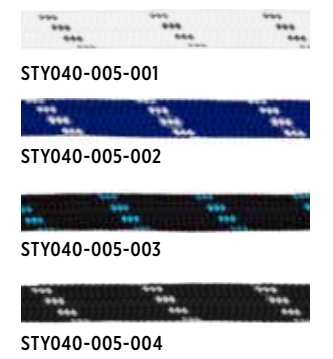
**DESIGNER POLYESTER CORD** +\$.75



NEW NEW NEW



**DESIGNER NYLON CORD** +\$.75



# DROP GRAPHICS

PRIMARILY USED AS FLAT EMBROIDERY -OR- WOVEN LABEL



GO-01



GO-02



GO-03



GO-04



GO-05



GO-06



GO-07



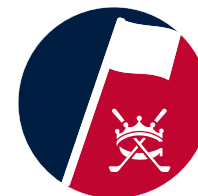
GO-08



GO-09



GO-10



GO-11



GO-12



GO-13



GO-14



GO-15



GO-16



GO-17



GO-18



GO-19



GO-20



GO-21



GO-22



GO-23



GO-24



# DROP GRAPHICS

PRIMARILY USED AS FLAT EMBROIDERY -OR- WOVEN LABEL



GO-25



GO-26



GO-27



GO-28



GO-29



GO-30



GO-31



GO-32



GO-33



GO-34



GO-35



GO-36



GO-37



GO-38



GO-39



GO-40



GO-41



GO-42



GO-43



GO-44



GO-45



GO-46



GO-47



GO-48

# DROP GRAPHICS

PRIMARILY USED AS FLAT EMBROIDERY -OR- WOVEN LABEL



GO-49



GO-50



GO-51



GO-52



GO-53



GO-54



GO-55



GO-56



GO-57



GO-58



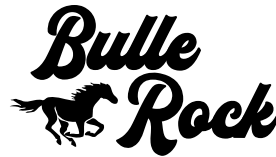
GO-59



GO-60



GO-61



GO-62



GO-63



GO-64



GO-65



GO-66



GO-67



GO-68



GO-69



GO-70



GO-71



GO-72





# DROP GRAPHICS

PRIMARILY USED AS FLAT EMBROIDERY -OR- WOVEN LABEL



GO-73



GO-74



GO-75



GO-76



GO-77



GO-78



GO-79



GO-80



GO-81



GO-82



GO-83



GO-84



GO-85



GO-86



GO-87



GO-88



GO-89



GO-90



GO-91



GO-92



GO-93



GO-94



GO-95



GO-96

# PRINT PATTERNS

DIGITAL PRINT: +\$1.50 / FRONT PANELS or VISOR +\$2 / FRONT PANELS + VISOR +\$4 / WHOLE HAT  
 SUBLIMATION: +\$1 / FRONT PANELS or VISOR +\$1.50 / FRONT PANELS + VISOR +\$3 / WHOLE HAT  
 PRINT COLORS & SATURATION MAY VARY DEPENDING ON FABRIC SELECTED

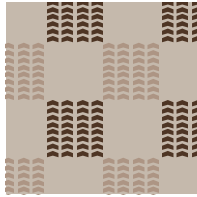
DIGITAL -OR- SUBLIMATION PRINT | 48 PER PRINT/PRINT COLOR



CP-001



CP-002



CP-003



CP-004



CP-005



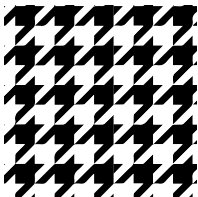
CP-006



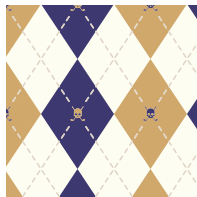
CP-007



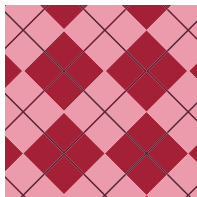
CP-008



CP-009



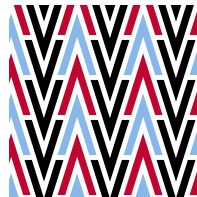
CP-010



CP-011



CP-012



CP-013



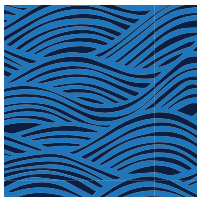
CP-014



CP-015



CP-016



CP-017



CP-018



CP-019



CP-020



CP-021



CP-022



CP-023



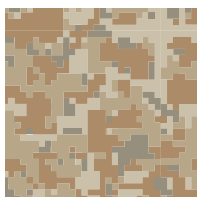
CP-024



CP-025



CP-026



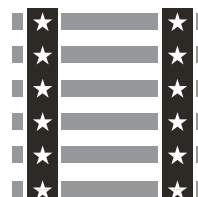
CP-027



CP-028



CP-029



CP-030



CP-031



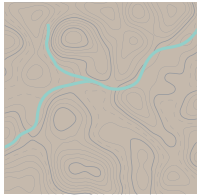
CP-032



DIGITAL PRINT: +\$1.50 / FRONT PANELS or VISOR +\$2 / FRONT PANELS + VISOR +\$4 / WHOLE HAT  
 SUBLIMATION: +\$1 / FRONT PANELS or VISOR +\$1.50 / FRONT PANELS + VISOR +\$3 / WHOLE HAT  
 PRINT COLORS & SATURATION MAY VARY DEPENDING ON FABRIC SELECTED

# PRINT PATTERNS

DIGITAL -OR- SUBLIMATION PRINT | 48 PER PRINT/PRINT COLOR



CP-033



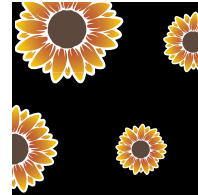
CP-034



CP-035



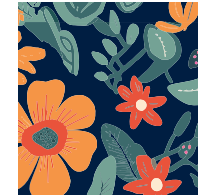
CP-036



CP-037



CP-038



CP-039



CP-040



CP-041



CP-042



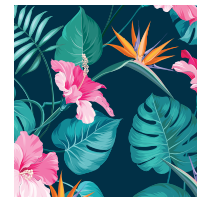
CP-043



CP-044



CP-045



CP-046



CP-047



CP-048



CP-049



CP-050



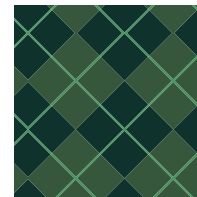
CP-051



CP-052



CP-053



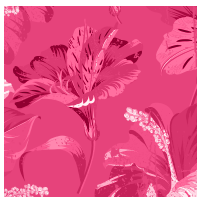
CP-054



CP-055



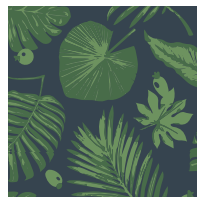
CP-056



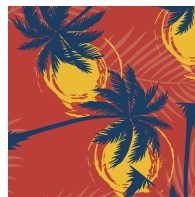
CP-057



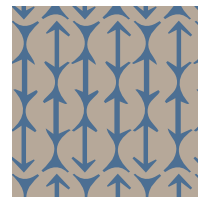
CP-058



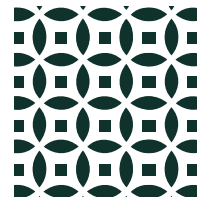
CP-059



CP-060



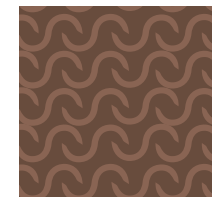
CP-061



CP-062



CP-063



CP-064

# POPULAR FONTS

DON'T SEE YOUR BRAND FONT? NO WORRIES, ASK AND WE'LL DO OUR BEST TO ENSURE WE MATCH YOUR BRAND FONTS!

## CLARENDON

SHADE shade Be cool. Stay cool. shadeheadwear.com

A B C D E F G H I J K L M N O P Q R S T U V W X Y Z

a b c d e f g h i j k l m n o p q r s t u v w x y z

## QUINCY

SHADE shade Be cool. Stay cool. shadeheadwear.com

A B C D E F G H I J K L M N O P Q R S T U V W X Y Z

a b c d e f g h i j k l m n o p q r s t u v w x y z

## AKTIV GROTESK

SHADE shade Be cool. Stay cool. shadeheadwear.com

A B C D E F G H I J K L M N O P Q R S T U V W X Y Z

a b c d e f g h i j k l m n o p q r s t u v w x y z

## PROXIMA NOVA

SHADE shade Be cool. Stay cool. shadeheadwear.com

A B C D E F G H I J K L M N O P Q R S T U V W X Y Z

a b c d e f g h i j k l m n o p q r s t u v w x y z

## FENWAY PARK

*SHADE shade Be cool. Stay cool. shadeheadwear.com*

*A B C D E F G H I J K L M N O P Q R S T U V W X Y Z*

*a b c d e f g h i j k l m n o p q r s t u v w x y z*

## BUNGEE

SHADE SHADE BE COOL. STAY COOL. SHADEHEADWEAR.COM

A B C D E F G H I J K L M N O P Q R S T U V W X Y Z

A B C D E F G H I J K L M N O P Q R S T U V W X Y Z

## COOPER BLACK

SHADE shade Be cool. Stay cool. shadeheadwear.com

A B C D E F G H I J K L M N O P Q R S T U V W X Y Z

a b c d e f g h i j k l m n o p q r s t u v w x y z

## COOPERPLATE

SHADE SHADE BE COOL. STAY COOL. SHADEHEADWEAR.COM

A B C D E F G H I J K L M N O P Q R S T U V W X Y Z

A B C D E F G H I J K L M N O P Q R S T U V W X Y Z

## MUSEO SLAB

SHADE shade Be cool. Stay cool. shadeheadwear.com

A B C D E F G H I J K L M N O P Q R S T U V W X Y Z

a b c d e f g h i j k l m n o p q r s t u v w x y z

## OCTIN COLLEGE

SHADE SHADE BE COOL. STAY COOL. SHADEHEADWEAR.COM

A B C D E F G H I J K L M N O P Q R S T U V W X Y Z

A B C D E F G H I J K L M N O P Q R S T U V W X Y Z

## BOURBON

SHADE SHADE BE COOL. STAY COOL. SHADEHEADWEAR.COM

A B C D E F G H I J K L M N O P Q R S T U V W X Y Z

A B C D E F G H I J K L M N O P Q R S T U V W X Y Z

## IVY PRESTO

SHADE shade Be cool. Stay cool. shadeheadwear.com

A B C D E F G H I J K L M N O P Q R S T U V W X Y Z

a b c d e f g h i j k l m n o p q r s t u v w x y z



**WHAT IS THE STANDARD ORDER MINIMUM?**

The standard order minimum is 144 total pieces. Within the 144 pcs order minimum, you can get up to (3) separate styles of 48pcs / 12 per color.

**WHAT IS THE STANDARD PRODUCTION LEAD TIME**

Our standard production lead time is 30-35 days + 3-5 days shipping (Can be slightly longer during peak seasons).

**WHAT IS THE STANDARD ART PRODUCTION LEAD TIME?**

Our Standard art turn time is 5-7 business days. During peak seasons it can range from up to 10-14 business days.

**DO WE OFFER PRE-PRODUCTIONS SAMPLES?**

Generally, we do not offer pre-productions samples. On orders of 576 pcs per style, we can in some cases accommodate the request. But note it can add another 3-4 weeks production time to the order being delivered. Additional costs will apply.

**DO WE OFFER CUSTOM GRAPHIC DESIGN SERVICES?**

In special circumstances we can offer customers custom design services. Customers will be invoiced for those service as a separate line item on their invoice at an agreed upon rate.

**REASONABLE EDIT REQUESTS**

Customers are expected to approve art files in no more than three rounds of edits. Additional hourly charges may apply after three rounds have been completed.

**HOW IS ARTWORK SUBMITTED TO CUSTOMERS?**

We supply customers with a PDF proof of each headwear design for their approval. (Note: PDF proof colors may vary from screen to printed and final production.)

**WHAT IS OUR CANCELLATION POLICY?**

All hats are built-from-scratch. Therefore, once the order is approved by the customer and submitted to the factory, we are **NOT** able to honor cancellation requests.

**WHAT ARE THE BEST FILE TYPES TO USE TO SUBMIT CUSTOMER GRAPHICS?**

Our production team uses VECTOR graphics in the formats of (.AI, .PDF, .EPS). .JPEG and .PNG files are low resolution and may require a redraw. We do **NOT** use customer supplied digitized graphic files. **Additional fees apply for graphic recreation.**

**WHAT ARE OUR BILLING PAYMENT TERMS?**

We generally expect payment on invoice. But we extend Net10 payment terms upon receiving all required documents (Credit Application, Sales Tax Exempt Form (If applicable)) and customer PO. Customers who request specific payment terms must qualify and be approved by management. (Note: Finance charges of 2% apply when payments exceed 30-days past due and **WILL NOT** be removed.)



**PRIVATE LABEL  
DOMESTIC HEADWEAR  
PROGRAM**



## SHADE CUSTOM EXPRESS

Domestic Headwear 2.0—The industry’s first Private Label Domestic Headwear Program. Our new printing technology enables us to expand beyond our embroidery-only domestic program, building on our Custom, Private Label heritage. Each hat includes our FREE private label, demonstrating our continued commitment to the marketplace. Our domestic stock program offers maximum flexibility, allowing you to combine different fits, styles, fabrics, and colors within a single minimum order for your club or event. While we’re happy to provide 48 of the same hat, we encourage you to take advantage of our program’s versatility.

### PROGRAM DETAILS

Base Cost for the primary embroidery location includes: flat embroidery, digitizing and FREE DTF private label.

- |   |  |
|---|--|
| <p><b>16</b> 16 STYLES TO CHOOSE FROM<br/><i>One size fits most</i></p> <p> <b>48PC MINIMUM ORDER</b><br/><i>Must use the same graphic/logo/thread colors on all 48pcs</i></p> <p> <b>COMBINE UP TO 12 PER FIT/STYLE AND FABRIC TYPE/COLOR TO REACH THE 48PC ORDER MINIMUM</b></p> <p> <b>EMBROIDERY ONLY</b><br/><i>Flat, Solid Fill Flat W/ Flat Outline, Flat Pearl Chain Stitch, Raised Satin Stitch / 3D Puff Embroidery available<br/>Additional charges apply for 3D Puff Embroidery - quote only</i></p> <p> <b>WANT TO ADD ON TO YOUR ORDER?</b><br/><i>Once you've hit our 48pc minimum order requirement you can add on to your order by increments of 24pcs (12 per fit) style/color.</i></p> | <p><b>10K</b> 10,000 STITCH COUNT MAX FOR EMBROIDERY</p> <p> <b>FREE INSIDE PRIVATE LABEL</b><br/><i>Direct to fabric print</i></p> <p> <b>NO SET-UP OR DIGITIZING FEE'S</b><br/><i>First location only - additional locations incur digitizing fees</i></p> <p> <b>GUARANTEED 10-DAY PRODUCTION + SHIPPING</b><br/><i>From final art approval</i></p> <p> <b>EXPRESS PRODUCTION/DELIVERY OPTIONS AVAILABLE</b><br/><i>Additional charges apply - quote only</i></p> |
|---|--|

### UNMATCHED PROGRAM FLEXIBILITY

12 PER STYLE/FIT AND FABRIC COLOR



### EMBROIDERY OPTIONS



FLAT EMBROIDERY  
*First location included in base cost*



SOLID FLAT FILL EMBROIDERY W/  
FLAT EMBROIDERY OUTLINE  
*First location included in base cost*



RAISED SATIN STITCH  
*Base cost + \$1.50*



FLAT PEARL CHAIN  
STITCH EMBROIDERY  
*Base cost + \$1.50*



3D PUFF RAISED EMBROIDERY  
*Base cost + \$4.00*

Additional embroidery locations, digitizing fees apply.

# LL0942-3TTM

- ◊ Rutledge 6 Panel Structured Mid High Crown Profile Fit
- ◊ Cotton Twill / Soft Trucker Mesh
- ◊ Slight Curve Visor
- ◊ Adjustable Plastic Snap Closure
- ◊ One Size Fits Most
- ◊ 8 Color Combos to Choose From



SHOWN IN  
KHAKI



# LL0943-3APP

- ◊ Rutledge 6 Panel Structured Mid High Crown Profile Fit
- ◊ Active Poly Performance Fabric W/ Perforated Back Panels
- ◊ Designer Rope
- ◊ Slight Curve Visor
- ◊ Adjustable TPR Rubber Snap Closure
- ◊ One Size Fits Most
- ◊ 7 Color Combos to Choose From



SHOWN IN  
SLATE



# LL0944-3ADP

- ◊ Rutledge 6 Panel Structured Mid High Crown Profile Fit
- ◊ ActiveDri Poly Performance Fabric
- ◊ Curve Visor
- ◊ Adjustable Plastic Snap Closure
- ◊ One Size Fits Most
- ◊ 7 Color Combos to Choose From



SHOWN IN  
STEEL



# LL0945-4PFT

- ◊ Cliff 5 Panel Structured Mid High Crown Profile Fit
- ◊ CPoly Foam W/ Trucker Mesh Back Panels
- ◊ Flat Visor
- ◊ Adjustable Plastic Snap Closure
- ◊ One Size Fits Most
- ◊ 8 Color Combos to Choose From



SHOWN IN  
WHITE/BLACK





# LL0946-5PPT

SHOWN IN  
CAROLINA/  
WHITE

- ◊ Derek 6 Panel Structured Mid Crown Profile Fit
- ◊ Pearl Polyester W/ Soft Trucker Mesh Back Panels
- ◊ Curve Visor
- ◊ Adjustable Plastic Snap Closure
- ◊ One Size Fits Most
- ◊ 8 Color Combos to Choose From



# LL0947-5VWT

SHOWN IN  
FOREST/  
STEEL

- ◊ Derek 6 Panel Structured Mid Crown Profile Fit
- ◊ Enzyme Wash Vintage Cotton Twill W/ Soft Trucker Mesh Back Panels
- ◊ Curve Visor
- ◊ Adjustable Plastic Snap Closure
- ◊ One Size Fits Most
- ◊ 6 Color Combos to Choose From



# DA1235-5TTM

SHOWN IN  
STEEL/  
WHITE

- ◊ Derek 6 Panel Structured Mid Crown Profile Fit
- ◊ Cotton Twill W/ Soft Trucker Mesh Back Panels
- ◊ Curve Visor
- ◊ Adjustable Plastic Snap Closure
- ◊ One Size Fits Most
- ◊ 12 Color Combos to Choose From



# LL0948-5AP5P

SHOWN IN  
KHAKI/  
NAVY

- ◊ Derek 5 Panel Structured Mid High Crown Profile Fit
- ◊ Active Poly Performance Fabric W/ Perforated Back Panels
- ◊ Slight Curve Visor
- ◊ Adjustable TPR Rubber Snap Closure
- ◊ One Size Fits Most
- ◊ 6 Color Combos to Choose From



# LL0949-5ATP

- ◊ Derek 6 Panel Structured Mid Crown Profile Fit
- ◊ Activetech+ Performance Fabric
- ◊ Curve Visor
- ◊ Adjustable Plastic Snap Closure
- ◊ One Size Fits Most
- ◊ 6 Color Combos to Choose From



SHOWN IN  
LIGHT BLUE



NAVY LT BLUE STEEL WHITE GREEN CRIMSON

# LL0954-21APR

- ◊ Blake 5 Panel Unstructured Mid Crown Fit
- ◊ Active Poly Performance Fabric
- ◊ Slight Curve Visor
- ◊ Contrast Color Heavy Cotton Rope
- ◊ Adjustable Plastic Buckle W/ Nylon Strap Closure
- ◊ One Size Fits Most
- ◊ 6 Color Combos to Choose From



SHOWN IN  
CRIMSON/  
BLACK



BLACK/WHITE NAVY/SCARLET GREEN/YELLOW KHAKI/BLACK CRIMSON/BLACK CHARCOAL/WHITE

# LL0950-8CHT

- ◊ Woodward Hybrid 6 Panel Structured Mid-high Crown Profile Fit
- ◊ Heather Twill / Trucker Mesh W/ Wide Wale Corduroy Front Panel
- ◊ Slight Curve Visor
- ◊ Adjustable Plastic Snap Closure
- ◊ One Size Fits Most
- ◊ 6 Color Combos to Choose From



SHOWN IN  
CHARCOAL  
GRAY HEATHER  
STEEL



OLIVE HTR/KHAKI/OLIVE BUCK/BUCK HTR/BLACK STONE/SCARLET HTR/WHITE MIDNIGHT/GRAY HTR/NAVY STONE/BUCK HTR/KHAKI CHARCOAL/GRAY HTR/STEEL

# DA1161-17LC

- ◊ Lance 6 Panel Unstructured Low Crown Profile Fit
- ◊ Pearl Polyester
- ◊ Curve Visor
- ◊ Adjustable Elastic Loop W/ D-Ring Velcro Closure
- ◊ One Size Fits Most
- ◊ 6 Color Combos to Choose From



SHOWN IN  
FOREST



NAVY MAROON FOREST WHITE BLACK KHAKI



# LL0955-23CRS

SHOWN IN  
CAROLINA/  
WHITE

- ◊ Luke 6 Panel Unstructured Regular Crown Profile Fit
- ◊ Cotton RipStop
- ◊ Curve Visor
- ◊ Adjustable Cloth Strap Metal Slider Closure
- ◊ Adult Fit
- ◊ 10 Color Combos to Choose From



# DA1280-23LWC

SHOWN IN  
STEEL

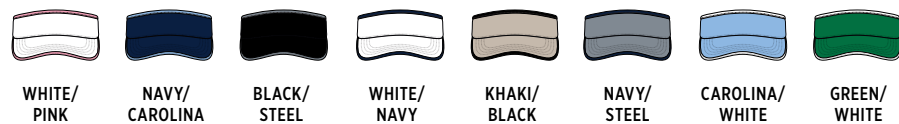
- ◊ Luke 6 Panel Unstructured Regular Crown Profile Fit
- ◊ Premium Lightweight Cotton
- ◊ Curve Visor
- ◊ Adjustable Cloth Strap Metal Slider Closure
- ◊ One Size Fits Most
- ◊ 12 Color Combos to Choose From



# DA1160-19HCV

SHOWN IN  
NAVY/  
CAROLINA

- ◊ Harrington High Crown Visor Fit
- ◊ Pearl Polyester W/ Top and Bottom Contrast Bindings
- ◊ One Size Fits Most
- ◊ 8 Color Combos to Choose From



# LL0951-10WC

SHOWN IN  
SURPLUS

- ◊ Bronson Wide Cuff Knit
- ◊ Fine Jersey Knit Weave
- ◊ One Size Fits Most
- ◊ 7 Color Combos to Choose From





BE COOL. STAY COOL.

✉ [info@shadeheadwear.com](mailto:info@shadeheadwear.com)

📷 [@shadeheadwear](https://www.instagram.com/shadeheadwear)

🌐 [shadeheadwear.com](http://shadeheadwear.com)

☎ 800-969-4280 (HATS)

TIFFIN, OH | LITTLETON, CO